



Implementation of Elementary Reading Level  
English Literacy Program

---

## **Kalwan Ashram School Project**

**Intervention 1**

# **TABLE OF CONTENTS**

---

<b>1. BACKGROUND</b>	<b>1</b>
<b>2. TEACHER TRAINING</b>	<b>2</b>
<b>3. BASELINE RESULTS</b>	<b>5</b>
<b>4. POST TRAINING ENGAGEMENT</b>	<b>7</b>
<b>5. CERTIFICATION RESULTS</b>	<b>8</b>
<b>ANNEXURE</b>	<b>10</b>

## **BACKGROUND**

---

[LeapForWord](#) is an educational NGO focused on solving the English Learning Challenge amongst students from regional language schools.

The English Literacy Program is LeapForWord's flagship solution for bringing English proficiency to students from regional language backgrounds. The scope of the solution is to enable teachers to take their respective students from Complete English Illiteracy to a stage where they can Read, Write, Comprehend & Structure Grammatically correct sentences.

The program comprises 4 learning levels.

41 Ashram schools from Kalwan, Nashik district, were identified for deployment of the second level of the English Literacy Program – Elementary Reading. The objective is to - **To ascertain the existing English levels of grade 3 to 6 students in Ashram schools and accordingly develop appropriate capabilities through the delivery of specific English learning concepts.**

[\[Refer Annexure - 1 for the list of schools\]](#)

# TEACHER TRAINING

The Objective of the training was to train the teachers for the Elementary Reading Level(Level 2 of English Literacy Program).

	Elementary Reading
Training Date	15 <sup>th</sup> December 2017
# of Teachers who attended the training	110
Grades	3 <sup>rd</sup> , 4 <sup>th</sup> , 5 <sup>th</sup> &6 <sup>th</sup>

## Training Flow:



The training process begins with the distribution of the books to be used during training. An inauguration ceremony marks the beginning of the training session. The session starts with some context building, followed by the actual training. It is delivered through a combination of printed and the digital medium. Towards the end of the session, the teachers are given a 'Magic Test'. Correct answers to questions posed, fetches them a copy of the Concept book. Before the session ends, the teachers are shown how to use the Initial Mapping test in their classes.

The teachers are briefed about the Certification test and are asked to prepare for the Certification test during the study period allocated.

## Feedback Results:

Post the training session, the teachers were asked to fill a feedback form to get a general feedback about the training. Three general questions were asked about the techniques being taught during the training session. **92 teachers** filled up the feedback form and submitted their responses

Following were the questions asked in the Feedback form:

1. Did you find this concept comparatively easier?
2. Were you aware about this teaching technique?
3. Would you like to teach this technique in your classroom?

Responses in actual numbers:

	Q.1 (Yes)	Q.2 (No)	Q.3 (Yes)
<b>Sound of Consonants Part 1</b>	91	61	92
<b>Sound of Consonants Part 2</b>	91	56	92
<b>1st sound of vowel</b>	91	42	92
<b>3 letter words</b>	92	40	92
<b>Words starting with vowels</b>	87	47	89
<b>Common words</b>	90	56	92
<b>“ee” Sound</b>	88	35	89
<b>“oo” Sound</b>	88	39	90
<b>“Y” ending words</b>	89	51	91
<b>“S” ending words</b>	91	50	89
<b>4 letter words</b>	91	52	89
<b>sh, ch, th, wh</b>	89	44	90
<b>Joint words</b>	89	51	92
<b>Similar letters</b>	91	47	92
<b>“e” ending words</b>	89	53	90
<b>2 vowels together</b>	89	55	91
<b>“ce”, “ci”, “cy”, “ge”</b>	89	51	92
<b>“tion”, “sion”, “ture”, “ed”</b>	91	43	90
<b>different sounds of vowels</b>	88	45	92
<b>outside technique</b>	88	64	90

Data Reads as:

- The above dataset shows the actual responses in numbers
- Example: 91 out of 92 teachers found the concept “**1st sound of vowel**” comparatively easier, while 42 teachers were not aware about this teaching technique and all of them would like to teach this technique in their classroom

**53% of the teachers were not aware about these teaching techniques and 99% of the teachers would like to teach these techniques in their classroom**

# BASELINE RESULTS

---

Baseline tests (Initial Mapping) were conducted at the beginning of the program in the month of Dec, 2017 to ascertain the English capabilities of students from the 41 ashram schools.

Mapping is conducted using one to one method (oral) and one to many method (written) for Elementary Reading. (First half of the Mapping is conducted using one to one method and the remaining using one to many). The teacher then captures the score of every student in a template given to her by LFW and takes a pic of that Template and sends it to LFW via Whatsapp. Once the data is received it is downloaded and populated on an excel sheet manually

## ELEMENTARY READING

1. Participating grades = 3<sup>rd</sup>, 4<sup>th</sup>, 5<sup>th</sup> & 6<sup>th</sup>
2. # of students reached = 3357

The mapping test comprised of:

### 1. The ASER test

Parameters Tested: Read Capital Letters|Read Small Letters|Read Simple Words|Meaning of Simple Words

### 2. The LFW test

Parameters Tested: Read Simple Words|Read Complex Words|Spell Letters | Spell Simple Words|Spell Complex Words

## RESULTS:

Initial Mapping revealed the English literacy proficiency among the tested students as follows:

### ASER Test

Grades	Read capital letters	Read small letters	Read words	Meaning of words
3	73%	62%	38%	30%
4	72%	67%	45%	45%
5	81%	75%	55%	50%
6	86%	82%	60%	60%
<b>Average</b>	<b>78%</b>	<b>72%</b>	<b>50%</b>	<b>46%</b>

Data Reads as:

- The above dataset indicates the average percentage score of students for the particular deliverable.
- Example: The average score for reading words for Grade 3 students is 38%, whereas it is 45% for Grade 4 students, 55% for Grade 5 students and so on

**LFW Test**

<b>Grades</b>	<b>Read simple words</b>	<b>Read complex words</b>	<b>Spell letters</b>	<b>Spell simple words</b>	<b>Spell complex words</b>
3	26%	22%	67%	34%	29%
4	24%	24%	73%	31%	28%
5	36%	31%	78%	36%	29%
6	44%	39%	81%	46%	40%
<b>Average</b>	<b>32%</b>	<b>29%</b>	<b>75%</b>	<b>37%</b>	<b>31%</b>

Data Reads as:

- The above dataset indicates the average percentage score of students for the particular deliverable.
- Example: The average score for reading complex words for Grade 3 students is 22%, whereas it is 24% for Grade 4 students, 31% for Grade 5 students and so on.



## POST TRAINING ENGAGEMENT

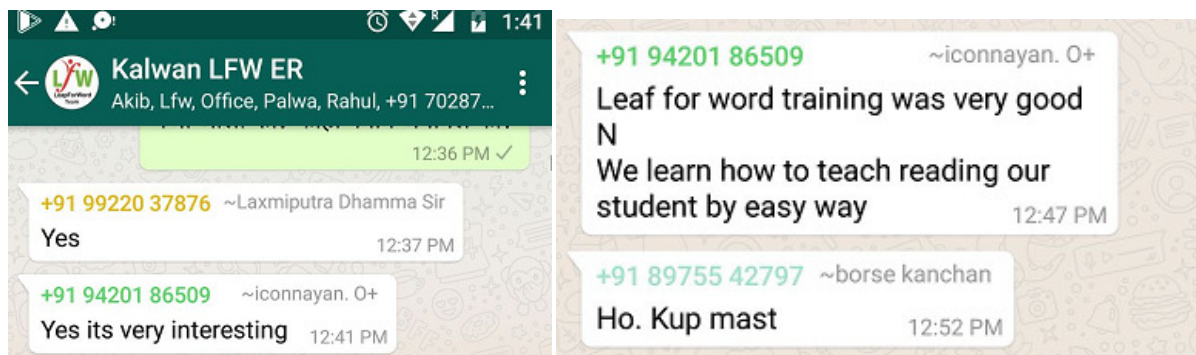
- Creation of WhatsApp group:** As part of our support, a WhatsApp group of all teachers was created, immediately after the training with the purpose of engaging with the teachers and helping them with the preparation for the Certification test.
- Type of engagement:** Support was offered via WhatsApp messages, calls. We sent reminders of the certification test date; and responded to the questions posted by the teachers in the group about the concepts taught.

This is what some of the teachers had to say on the WhatsApp Group:



“This is all possible because of the excellent training.

Thank you to LFW Team from bottom of my heart.”



# CERTIFICATION RESULTS

The objective of conducting the Certification Test was to verify how many amongst the trained teachers had understood the teaching techniques of the Elementary Reading level well enough so as to be able to teach in their respective classes.

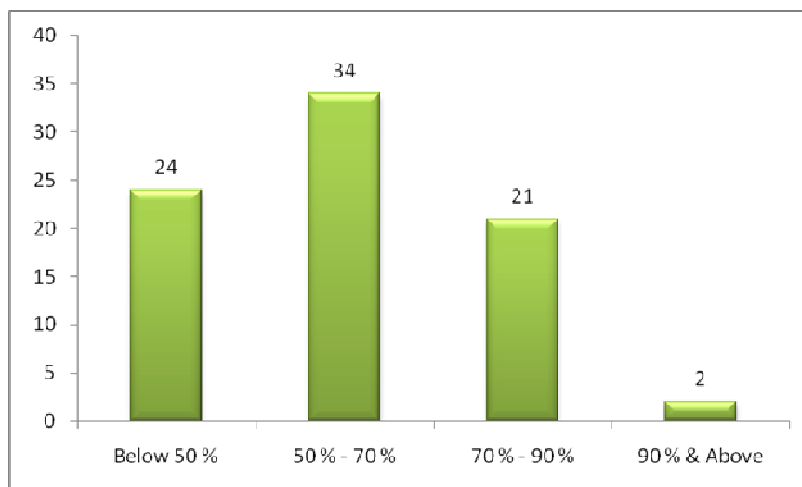
The Certification Test was conducted on 23<sup>rd</sup> December 2017 & 24<sup>th</sup> December via an online assessment Portal- "Question Pro: [www.questionpro.com](http://www.questionpro.com)

The link to the online test was shared with all trained teachers via WhatsApp and they were free to take the test anytime between 9:00 am on 23<sup>rd</sup> December to 12:00 midnight on 24<sup>th</sup> December.

## ELEMENTARY READING

Teachers	Time Details	Score Details
Total # of teachers appeared for the Certification Test = <b>81</b>	Allotted time for test: <b>30 mins</b> Avg. time taken to solve the test: <b>16mins</b>	Total Marks = <b>148 marks</b> (Each question carries different weightage)
# of Teachers who cleared (Cut off: above 50%) the online Certification test = <b>57</b>	Fastest time to solve: <b>4 mins</b>	Average score: <b>82 marks</b> Highest score: <b>140 marks</b>

**Split of teachers based on their scores**



**23 teachers have scored above 70%**

**Immediate Next Steps:**

Distribution of books: Elementary Level Reading concept books would be distributed in the classes (3<sup>rd</sup> , 4<sup>th</sup> , 5<sup>th</sup> & 6<sup>th</sup>), where the teachers have cleared the Certification test.

## ANNEXURE

---

### 1. List of all 41 schools and details of students in the English Literacy Program:

Sr. No	School Name	Elementary Reading
1	Chankapur	203
2	Khirad	185
3	Kanashi (Girls)	218
4	Narul	89
5	Dalwat	191
6	Ganore	202
7	Mohandari	205
8	Visapur	160
9	Kathre (Digar)	169
10	Bapkheda	213
11	Khade (Digar)	201
12	Desgaav	170
13	Gopalkhadi	199
14	Rameshwar	154
15	Devpurpada	82
16	Bhilwad	173
17	Saalher	179
18	Tatani	183
19	Dodeshwar	138
20	Talwade	176
21	Haranbaari	188
22	Dahidule	210
23	Vaghamba	192
24	Manur	202
25	Virgaavpada	157
26	Palsan	153
27	Aambupada	221
28	Bubli	161

29	Maani (Girls)	188
30	Dolhre	76
31	Bhormal	151
32	Sarad	152
33	Saalbhoy	180
34	Khuntvahir	218
35	KaranjulDevaldari	90
36	KaranjulKa	172
37	Borpada	87
38	Paregaon	175
39	Garbad	128
40	Pandrun	195
41	Dubgule	23
<b>Total</b>		<b>6809</b>

*Note: The following schools have merged:*

- *Devpurpada&Pandrun*
- *Garbad&Dubgule*
- *Maani (Girls) &Borpada*

## 2. Initial Mapping Test Paper (Elementary Reading)

### मुलानावाचायलासांगा

Q1) 1.A 2.J 3.Q 4.N 5.E 6.Y 7.R 8.O

Q2) 1.h 2.p 3.x 4.u 5.m 6.d 7.g 8.t

Q3) 1.Cat 2.Sun 3.Red 4.New 5.Fan 6.Bus

Q4) a) What is the time?

b) This is a large house

c) I like to read

d) She has many books

Q5) 1.Seed 2.Band 3.End 4.Long 5.Gift

Q6) 1.Doll 2.Cage 3.Hole 4.Mansion 5.Army

Q7) Meanings of words - 1.Cat 2.Sun 3.Red 4.New 5.Fan 6.Bus

### मुलानावहीमध्ये लिहिण्यासाठी:

Q8) 1.f 2.L 3.k 4.v 5.w

Q9) 1.Sit 2.Room 3.Body 4.King 5.Bank

Q10) 1.Shop 2.Clip 3.Kite 4.Gold 5.Step

[www.leapforword.org](http://www.leapforword.org)